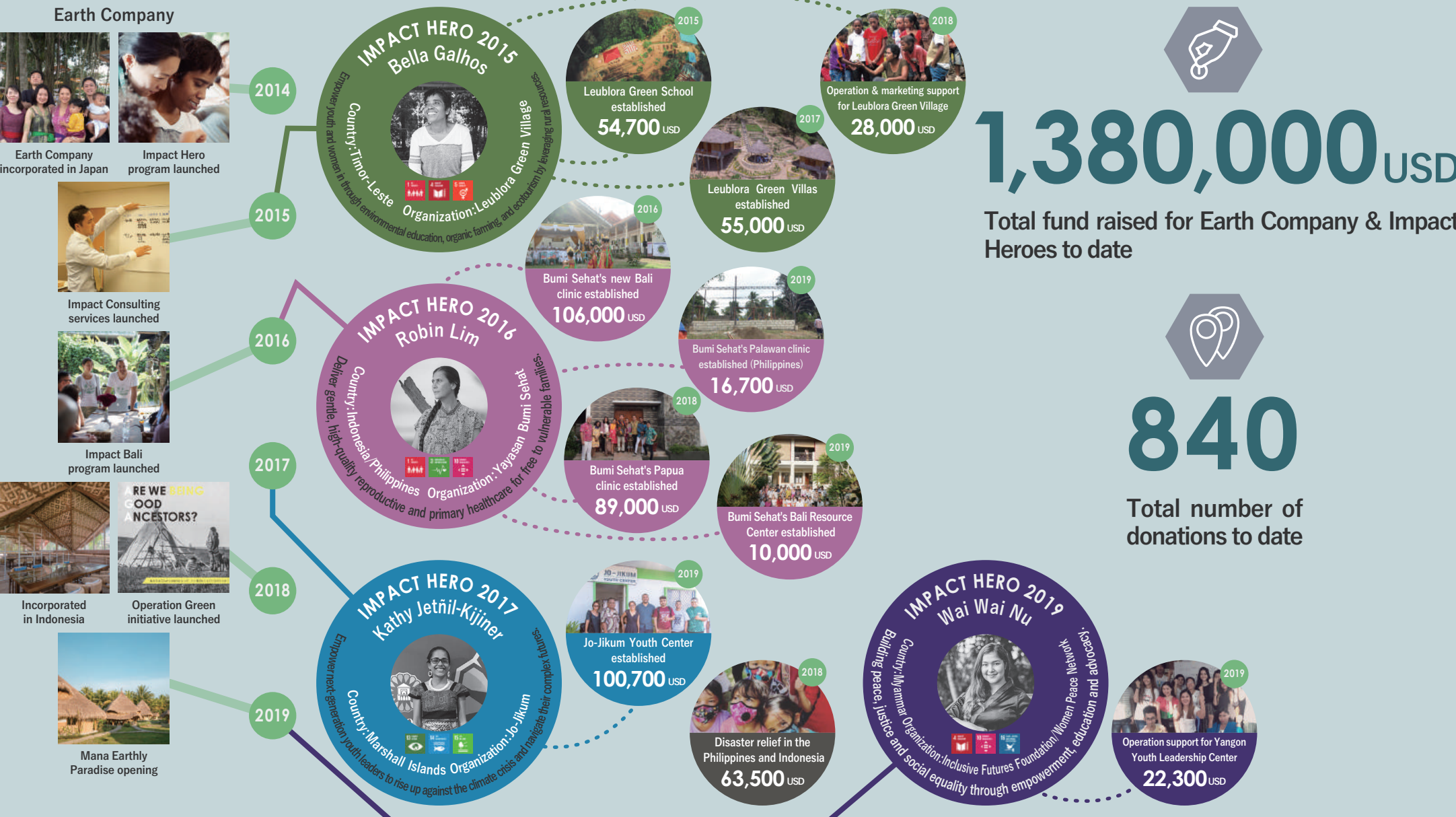


Earth Company 2014-2019 HIGHLIGHTS

Earth Company empowers and inspires change-makers who realize social change for our future generations.



5 years in review



IMPACT HERO

In the Impact Hero Program, each year we select one Impact Hero – an exceptional change-maker who has the potential to shape the future of developing countries in the Asia-Pacific – and provide him/her tailored support over a three-year period.



Impact Bali delivers immersive impact study tours in Ubud, the social innovation hub in Bali, to nurture and inspire the next generation of changemakers.



IMPACT BALI

IMPACT CONSULTING

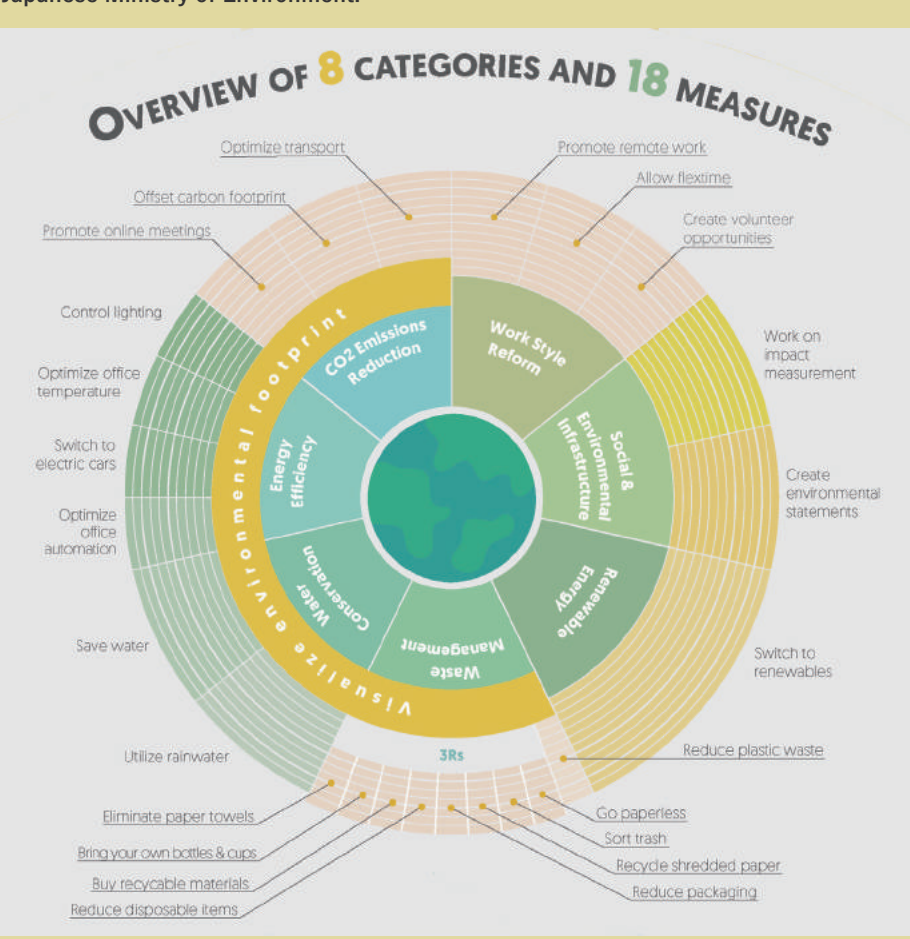


Impact Consulting provides advisory services to companies and nonprofits to amplify their impact, innovation, and sustainability.

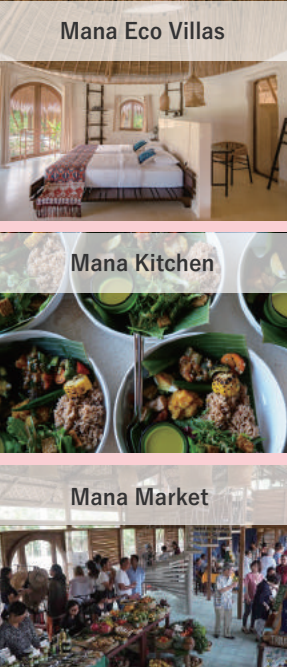


Operation Green

Operation Green aims to facilitate an eco-shift for organizations through the adoption of sustainable practices in the operational components including lighting, water, waste, etc. This initiative is funded by the Japan Fund for Global Environment under the Japanese Ministry of Environment.



Mana Earthly Paradise



A next generation eco-hotel, Mana strives to be ecologically- and socially-minded in every way possible through our earth bag villas, probiotic restaurant, and conscious store. Through sustainable practices and innovative eco-technologies, Mana aims to be part of the solution, not the problem.



Number of guests who have experienced the eco lifestyle at Mana (as of Dec 2019)

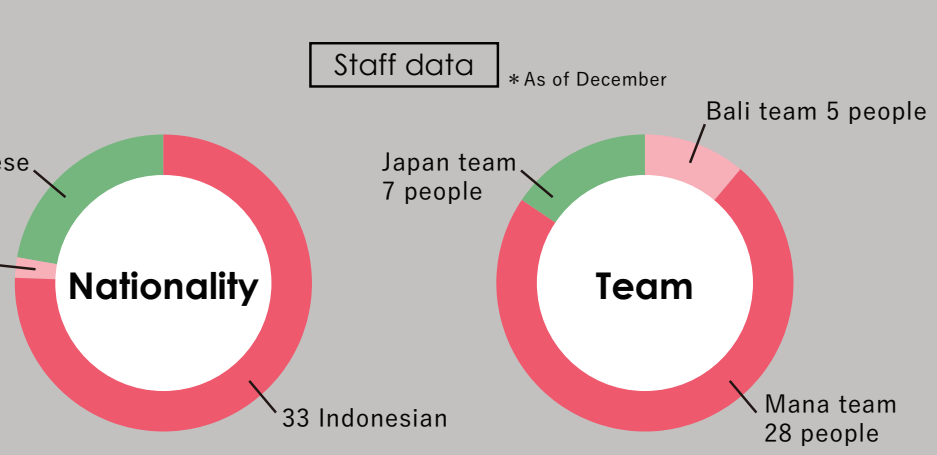
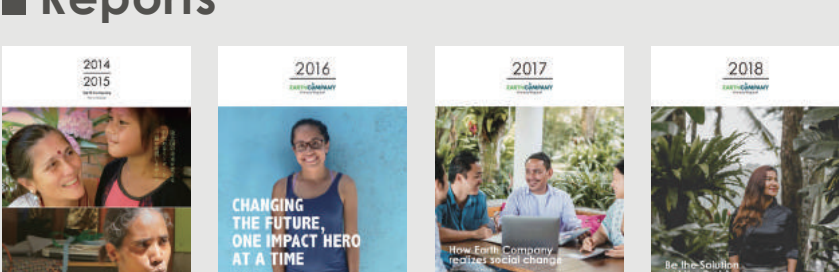
2019 Grand opening



Earth Company Eco Goods



Our Reports



2020 Plans

To strengthen organizational capacity and expand our impact, we aim to increase the financial contributions from the revenue-generating businesses including Mana Earthly Paradise.

IMPACT HEROES

- Further strengthen the support provided to Impact Heroes: 1) Create partnerships with key intermediaries and foundations for deeper collective impact. 2) Build a robust roster of experts and consultants. 3) Consolidate the contents and modules delivered to Impact Heroes.
- Open call for Impact Hero 2021



IMPACT BALI

- Expand partnerships with schools and companies in Southeast Asia.
- Launch the impact tour program in the Marshall Islands in partnership with Jo-Jikum.



IMPACT CONSULTING

- Expand the scope of Operation Green to target schools and nonprofits based on popular demand.



Mana Earthly Paradise

- Achieve break-even by increasing the villa occupancy rate and restaurant revenue.
- Improve Mana's overall financial stability so that it can contribute to the not-for-profit Impact Hero program.

